

**Directions from Atlanta  
To  
The Reserve Club at Woodside Plantation**

Take I-20 East towards Columbia, SC

Take SC Exit #18 (Hwy.19). Turn right at end of exit onto Hwy.19 going towards Aiken, SC

Stay on Hwy.19 until you get to the stoplight at the intersection of Hwy.19 and Hwy.118

Turn right onto Hwy.118

Stay on Hwy.118 for approx. 8-10 miles until you come to the intersection of Hwy.118 and Hwy.302 (Silver Bluff Rd.) There is a Blockbuster Video across the street on the left side.

Turn right onto Hwy.302 / Silver Bluff Rd.

Follow Silver Bluff / Hwy.302 for 1.6 miles. You will pass Woodside Executive Office Park on the left. The entrance to Woodside Plantation will be on the left just past the brown split rail fence.

After passing thru the main gate take a right onto Woodside Plantation Drive. Stay on Woodside Plantation Drive for 1 mile. The entrance to The Reserve Club is straight ahead.

Golf shop phone number is 803-648-2442

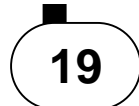
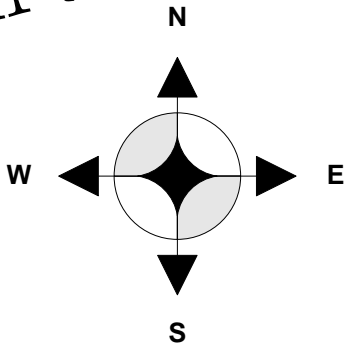
Atlanta/Augusta



Columbia SC

EXIT 18

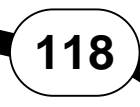
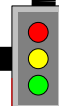
From ATLANTA



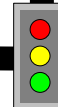
To Aiken



4.5 Miles



4.8 Miles

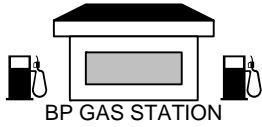
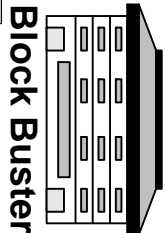


Pine Log Road

Silver Bluff Road  
1.6 Miles to Woodside



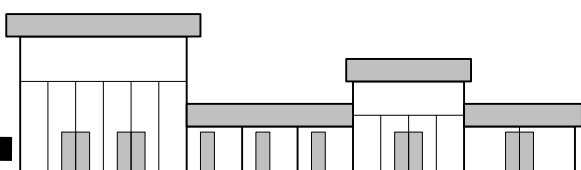
Pine Log Road



Woodside Plantation



Guard Gate



The Reserve Club