

Directions from Columbia  
To  
The Reserve Club at Woodside Plantation

Take I-20 West Towards Augusta, GA

Take Exit #22 (US 1). Turn left at end of exit onto US 1 going towards Aiken, SC

Stay on US 1 for approx. 10 miles. US 1 changes names and becomes York St. Stay on York St. until you come to a dead end stop sign. South Boundary Rd.

Turn right onto South Boundary Rd.

Make an immediate left onto Whiskey Rd. (Hwy 19)

Travel approx. 1.6 miles to the intersection of Whiskey Rd. and Silver Bluff Rd. The Honey Baked Ham store is on the right. Turn right onto Silver Bluff Rd.

Follow Silver Bluff / Hwy. 302 for 2.1 miles. You will pass Woodside Executive Office Park on the left. The entrance to Woodside Plantation will be on the left just past the brown split rail fence.

After passing thru the main gate take a right onto Woodside Plantation Drive. Stay on Woodside Plantation Drive for 1 mile. The entrance to The Reserve Club is straight ahead.

Golf shop phone number is 803-648-2442

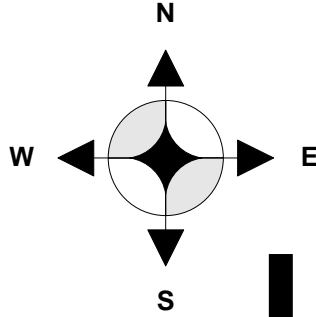
Atlanta/Augusta



Columbia S.C.

Exit 22

From Columbia



York Street

10 Miles



South Boundry

1.6 Miles

Whiskey Road

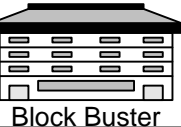
Silver Bluff Rd.  
2.1 Miles

302



19

Bluff Rd.



Block Buster

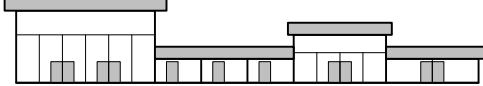
118

Pine Log Road

118

Silver

302



The Reserve Club

1 Mile

Pine Log Road



Woodside Plantation



BP GAS STATION



Guard Gate

302

Silver Bluff Rd.